

ET 861A



Modular Stations Series ET 861A

The correct choice of station determines the quality and benefit of an Intercom system. The 2-wire door station module ET 861A was developed for use in doors and gates, as well as entry ways and internal security sluices. The design is matched to the Siedle Vario 6 series. Matching the Intercom module, further function modules are available. Thanks to these modules doors and gates, as well as entry- and gateways, to which a speech connection is required, can be integrated in the Intercom system in an elegant, modern design. This

ET 861A

Fully digital 2-wire door station module with DSP-technology for hands-free speech in OpenDuplex® for optimal speech quality at the door, even from great distance or with high ambient noise. One relay output for direct connection of a door opener. One input for floating contacts allows for example door-open indication.

Typical applications: Speech solution at doors and gates, barriers, turnstiles. Available as flush mount, surface mount, for integration in columns or letterbox systems.

way all advantages of the Intercom system can be used, e.g. call transfer into the telephone- or cellular-network and networking. The door station module ET 861A has new DSP-technology, which allows functions like Audio-Monitoring, Loudspeaker-Microphone Monitoring or OpenDuplex®. Additionally the station is prepared for software download of future functions. Available in different colours..

Technical Data – Benefits

TECHNICAL DATA ET 861A

Housing:	Siedle Vario, IP 54
Microphone:	electret microphone
Loudspeaker:	special membrane type for optimal sound quality, sound pressure 85 dB/1 W/1 m, 8 Ω
Amplifier:	built-in amplifier 2.5 W output capacity with built-in loudspeaker: 1.5 W
Input:	for floating contacts
Output:	relay output 30 V / 1 A
Transmission bandwidth:	16.000 Hz
Operating temperature range:	-20° C to +70° C (-4° F to 158° F)
Cabling:	star feed, 2-wire, twisted pair
Power supply:	from Intercom Server
Signalling:	2B + D (2 x 64 kBit/s speech, 16 kBit/s data)
Measurements:	99 x 99 x 9*mm (3.9 x 3.9 x 0,35 in)
Weight including package:	200 g (0.45 lbs)

*...panel thickness above the surrounding frame

LINE LENGTH ET 861A

Cable type	Power Supply Intercom Server		
	24 V AC	30 V DC	26 V DC
Ethernet cable e.g. Cat. 5 Loop resistance: 190 Ω/km Capacity: 48 nF/km (14.4 nf/1000 ft)	2100 m	1900 m	1300 m
	6899 ft*1	6233 ft*1	4265 ft*1
	1300 m	1000 m	700 m
	4265 ft*2	3280 ft*2	2296 ft*2
Telecommunication cable e.g. F-YAY; 0.6/0.8 mm; AWG: 22/20 Loop resistance: >135 / >73 Ω/km Capacity: 100 nF/km (30.5 nf/1000 ft)	1900 m	1700 m	1300 m
	6233 ft*1	5577 ft*1	4265 ft*1
	1200 m	1000 m	700 m
	3937 ft*2	3280 ft*2	2296 ft*2

*1... with volume level 9

*2... with volume level 11

Note: The maximum line length rises significantly with a decreasing volume level.

BENEFITS

- Fully digital modular door station in modern DSP-technology
- Brilliant 16 KHz speech quality
- Elegant design, available in different colours
- Connectors for call buttons or full keypad
- One input, e.g. for connecting a proximity sensor
- One relay-output, e.g. for direct control of a door-opener
- Monitoring of cables, loudspeaker and microphone for increased reliability of operation
- Configurable Audio Monitoring feature
- Open for future features due to downloadable DSP-software

SYSTEM REQUIREMENTS

- GE 800 (min. PRO 800 1.0) with G8-GED
- GE 300 (min. PRO 800 1.0) with G3-GED

The station modules will be identified as "ET 861A (Rev1)" or "ET 861A (Rev2)" from PRO 800 5.0 and CCT 800 5.0. "ET 861A (Rev2)" with revision "AB" or higher is a device with a higher volume.

HIGHER VOLUME

- With station modules ET 861A from revision "AB" the volume levels **0-11** are available with PRO 800 5.0 or higher.

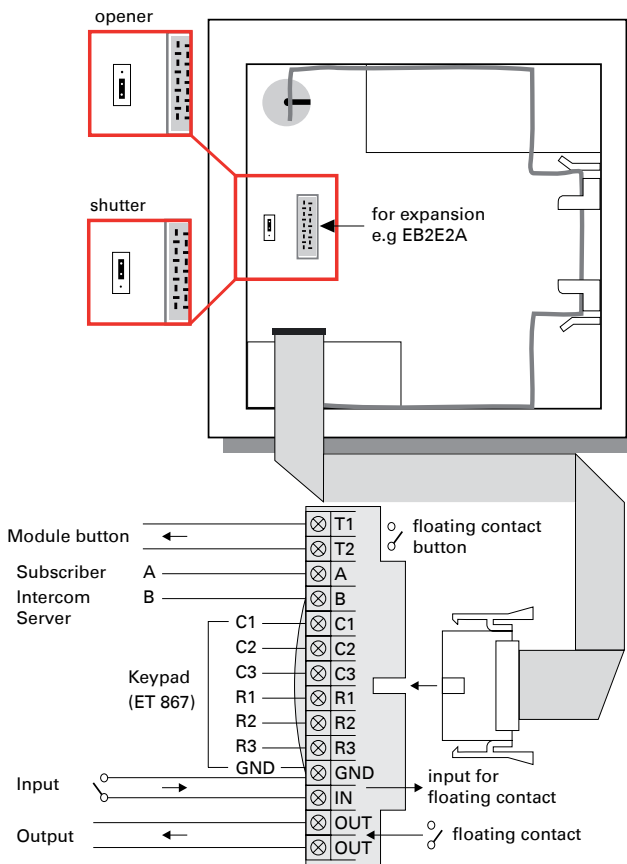


Installation

PRECAUTIONS

- When opening the stations ESD precautions must be observed.
- The stations may be opened by authorised service engineers only.

CONNECTION ET 861A

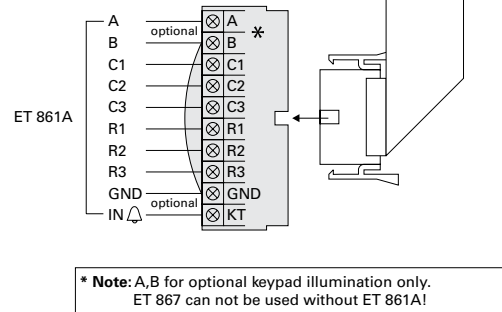


CONNECTION KEYPAD / BUTTONS

It is possible to connect either a complete keypad with row-column matrix (e.g. ET 867) or single buttons to the ET 861A (see next page).

CONNECTION ET 867

1	2	3	N.A.
4	5	6	• N.A.
7	8	9	↔ N.A.
F (=T)	0	△ (IN)	C (=X)



- **A, B** (optional power supply for keypad illumination): plug-in transformer (12 – 24 VAC / 15 – 34 VDC) or supply from the Intercom Server (connection at ET 861A, in parallel to A,B)
- **GND, IN:** The “bell”-button can be connected at the input (IN and GND) of the ET 861 and given a function in the Intercom Server.

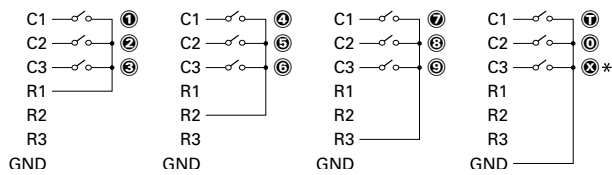
Connection of Buttons

CONNECTION KEYPAD / BUTTONS

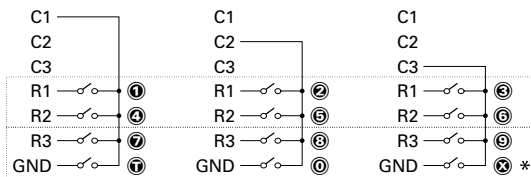
It is possible to connect either a complete keypad with row-column matrix (e.g. ET 867) or single buttons (e.g. TM611-04).

A maximum of 4 single buttons with common ground can be connected (see diagrams below). The button symbols show the dialling in the Intercom Server.

Connection of 4 times 3 buttons: Up to 4 x 3 buttons can be connected, if each 3 buttons have their own common ground.

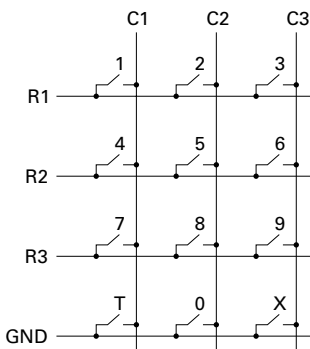


Connection of 3 times 4 (6 times 2) buttons: Up to 3 x 4 (or 6 x 2) buttons can be connected, if each 4 (2) buttons have their own common ground.



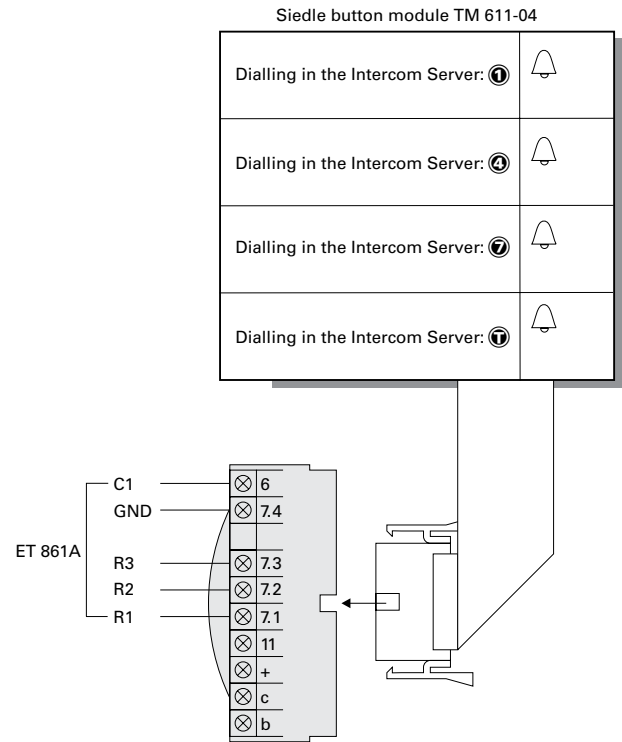
* **Attention:** ❷ can not be used for direct dialling!

KEYPAD MATRIX



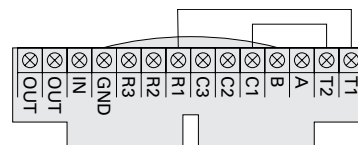
Line length between keypad and ET 861A:
max. 50 cm (19.7 in)

EXAMPLE: SIEDLE BUTTON MODULE TM 611-04



EXAMPLE: ET 861A MODULE BUTTON

Usage of module button (⚡) as button ❶ in the Intercom Server:



QUALITY TESTED. RELIABLE. SMART.

COMMEND products are developed and manufactured by Commend International in Salzburg, Austria.

The development and manufacturing processes are certified in accordance with **EN ISO 9001:2008**.

The technical data contained herein has been provided solely for informational purposes and is not legally binding. Subject to change, technical or otherwise. IoT[®], OpenDuplex[®] and Commend[®] are trademarks registered by Commend International GmbH. All other brands or product names are trademarks or registered trademarks of the respective owner and have not been specifically earmarked.

A STRONG WORLDWIDE NETWORK

COMMEND is represented the world over by local Commend Partners and helps to improve security and communication with tailored solutions.

www.commend.com

